

DRIED CHRYSANTELLUM
SPECIFICATION SHEET**BOTANICAL DESCRIPTION**

The *Chrysantellum americanum* is a herbaceous plant of the Compositae family that grows in the tropical area of Africa and tropical America preferring the wastelands, dry and rocky. The plant is erect or prostrate with very jagged leaves, three or five lobes deeply incised, each lobe is in turn divided and ends in a pointed shape. Its flowers are assembled in many terminal flower heads, long stalked and yellow in color. The fruits are achenes flattened, dark-colored, flared walls at the top and surrounded by a bract whitish.

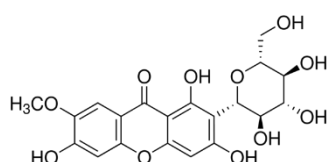
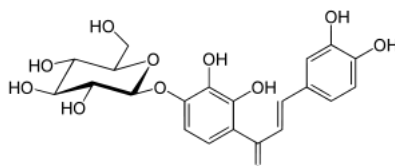
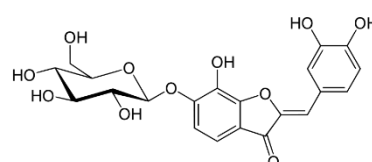
REGISTRATION NUMBERS

Botanical Name: *Chrysantellum americanum*
INCI Name: *Chrysantellum americanum Extract*
CAS NUMBER: 94166-95-7
EINECS/ELINCS NUMBER : 303-394-5

SPECIFICATIONS/ TECHNICAL CHARACTERISTICS






Color: Brown
Odor: Characteristic
Taste: Characteristic
Loss on Drying: Max. 6 %
Ash: Max. 6 %
Pesticides: According to EU 396/2005 Regulation

Chrysantellum americanum contains saponins and flavones of high pharmaceutical value. The three main flavonoids present in the plant are flavonomarein (isookanin-7-o-glucoside), marein (okanin-4'-o-glucoside) and maritimein (maritimetin-6-o-glucoside). Other studies on chrysantellum have revealed a protein content high enough for the plant and the presence of as many as fifteen amino acids including valine, leucine and isoleucine.

**Flavonomarein****Marein****Maritimein**

PROPERTIES AND USES

The plant rich in flavonoids and saponins exerts a protective action against capillary and venous endothelium, reduces the fragility and permeability of capillaries and veins and is therefore indicated for the treatment of venous disease of the lower limbs characterized by weakening of the vessel wall, increased permeability and edema formation. Chrysantellum also possesses the following properties:

-  **anti-inflammatories**,
-  **vascular protectors** : especially on the small blood vessels (capillaries) ;
-  **Choleretic** : increase the production of bile in the liver ;
-  **Hepatic protector** : better efficiency in the elimination of toxic substances by the liver, and facilitating the regeneration of liver cells (hepatocytes) after toxic or viral hepatitis ;
-  **Prevention of complications of type 2 diabetes** : thanks to its medicinal tannins and few alkaloids.

Undesirable effects : No side effect has been related to Chrysantellum americanum extract intake.

RECOMMENDED STORAGE CONDITIONS

The dried chrysantellum should preferably be stored in dry and well-ventilated area. Under normal storage conditions, the product shelf life is up to 03 years.